



PLACE
STAMP
HERE

About the Morton Grove Historical Museum:

Located in Morton Grove's beautiful Harrer Park, the Morton Grove Historical Museum consists of the Haupt-Yehl Historic House Museum and an adjacent state-of-the-art Education Center. A joint effort between the Morton Grove Park District and the Morton Grove Historical Society, the museum serves as both a living testament to Morton Grove's history, and a repository for a rich local history collection, which ranges from 19th century kitchen artifacts to numerous photographs, documents and ephemera. Within our walls, the story of Morton Grove, from its inception to present day, comes colorfully to life.



The Morton Grove Historical Museum
Morton Grove Park District Prairie View Center
6834 Dempster Street
Morton Grove, IL 60053

Morton Grove Historical Museum: Educational Programs

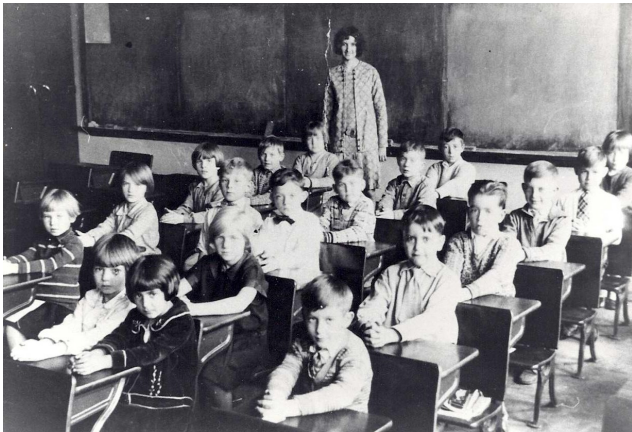
Launching 2016!



A Unique Educator Resource Located Right in Your Own Community!

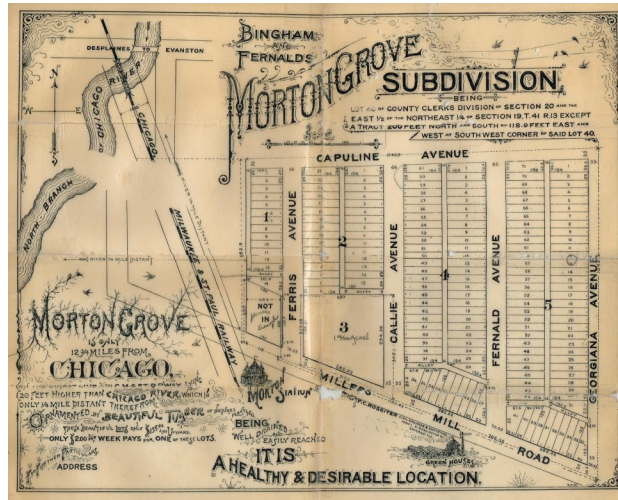
The Morton Grove Historical Museum exists for the community it serves, and providing an exciting learning experience for our local students is of utmost priority. Our new educational programs have been developed to offer students access to our facility and to our primary source historic collections—a unique educational opportunity that will both supplement and enhance more traditional learning methods in history and social studies classrooms.

Our collections represent a timeframe spanning the mid 19th Century to the present day. Through a critical analysis of artifacts, students will have the chance to reflect upon the evolution of various sociocultural elements, including commerce, government, entertainment, transportation and technology.



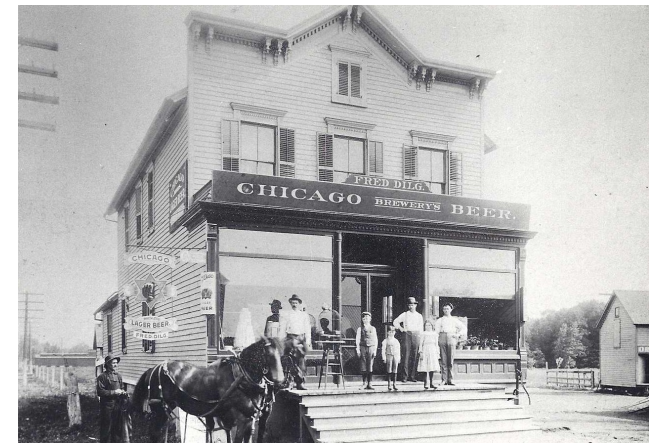
How it Works

A series of lesson plans are being developed incorporating the collections of the Morton Grove Historical museum into history and social studies curricula. The Morton Grove Historical Museum staff and board have researched similar successful programs offered by other museums, and have worked diligently with local educators to ensure that our program offerings reflect Illinois State and Common Core standards, in addition to the specific themes and topics that school curricula address. The final product will be a menu of supplementary curriculum programs, available to educators at registered schools to choose from as needed.



For a one time yearly enrollment fee (TBD) schools will have unlimited access to these programs. A complete program guide will be released in anticipation of the 2016-2017 school year.

We will be expanding our offerings consistently, and are happy to work with you if you have specific learning goal in mind.



Why This Program?

Both the Smithsonian and the Library of Congress have published extensive resources documenting the benefits of exposing students to primary source materials. They include:

- Development of cognitive, investigative, deductive reasoning and problem-solving skills
- The appealing factor in access to what is tangible
- Ability to address varying learning styles and provide an active learning experience

CONTACT US TO LEARN MORE!

By phone: 847-965-0203

By email: mdlando@mgparks.com

Visit us on the web:

www.mortongrovecparks.com

www.mortongrovehistoricalmuseum.wordpress.com/

[www.facebook.com/
mortongrovehistoricalsociety](https://www.facebook.com/mortongrovehistoricalsociety)